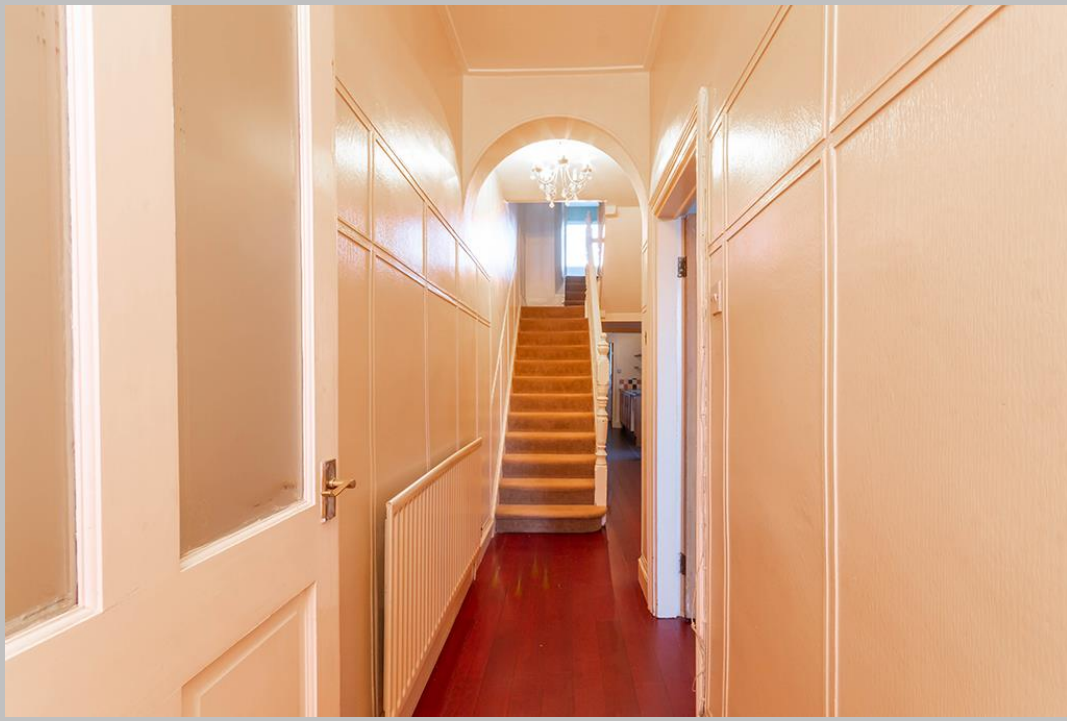




**19 Bede Street**  
**Amble**





19 Bede Street, Amble, Morpeth, Northumberland, NE65 0EA

Guide Price £135,000

**GREAT INVESTMENT OPPORTUNITY - 2/3 BEDROOM, STONE TERRACE HOUSE REQUIRING UPDATING**

A stone built terraced house in the centre of Amble, ideal as a main home, investment or holiday home - three bedroom house, whilst requiring some modernisation, has retained many period features including lovely stripped pine internal doors, original tiled floor to the vestibule, deep skirting boards and decorative ceiling coving to the living room and front bedrooms. The house has accommodation over two floors, and has double glazed uPVC windows and a yard to the rear, with access to the lane.

Vestibule with original tiled floor | Hallway with traditional balustrade, wood floor and under stairs storage | Sitting room with attractive feature fireplace and bay window | Dining room with inglenook style fireplace | Galley kitchen with gas hob and electric oven | Utility room with gas boiler | First floor half landing | Family bathroom with separate WC | Double bedroom at rear | Two bedrooms at the front, with the larger bedroom accessed via the smaller bedroom | Rear yard | NO UPWARD CHAIN.

Services: Mains Electric, Gas, Water & Drainage | Gas Central Heating | Tenure: Freehold | Council Tax: Band B | EPC: E











